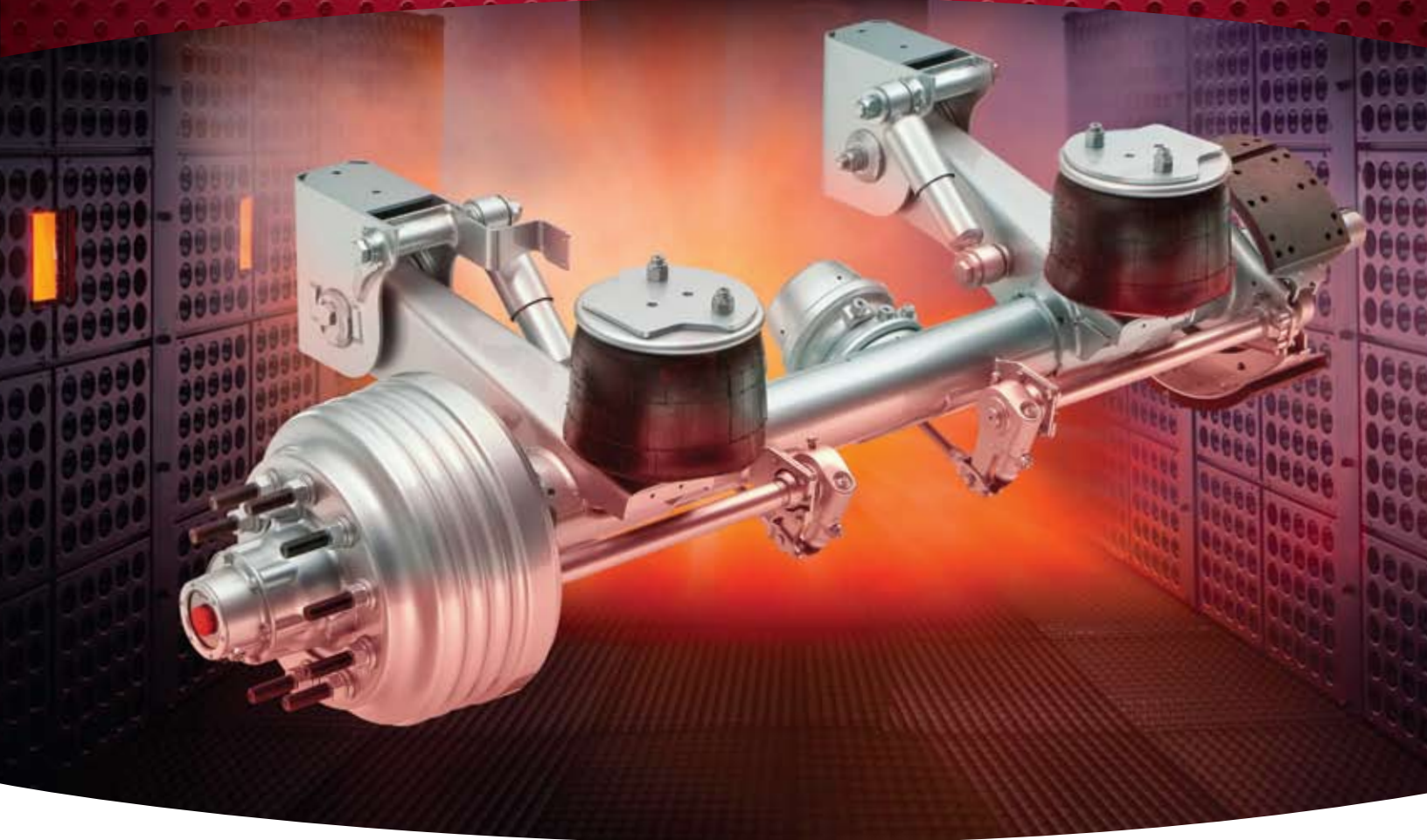


MERITOR®

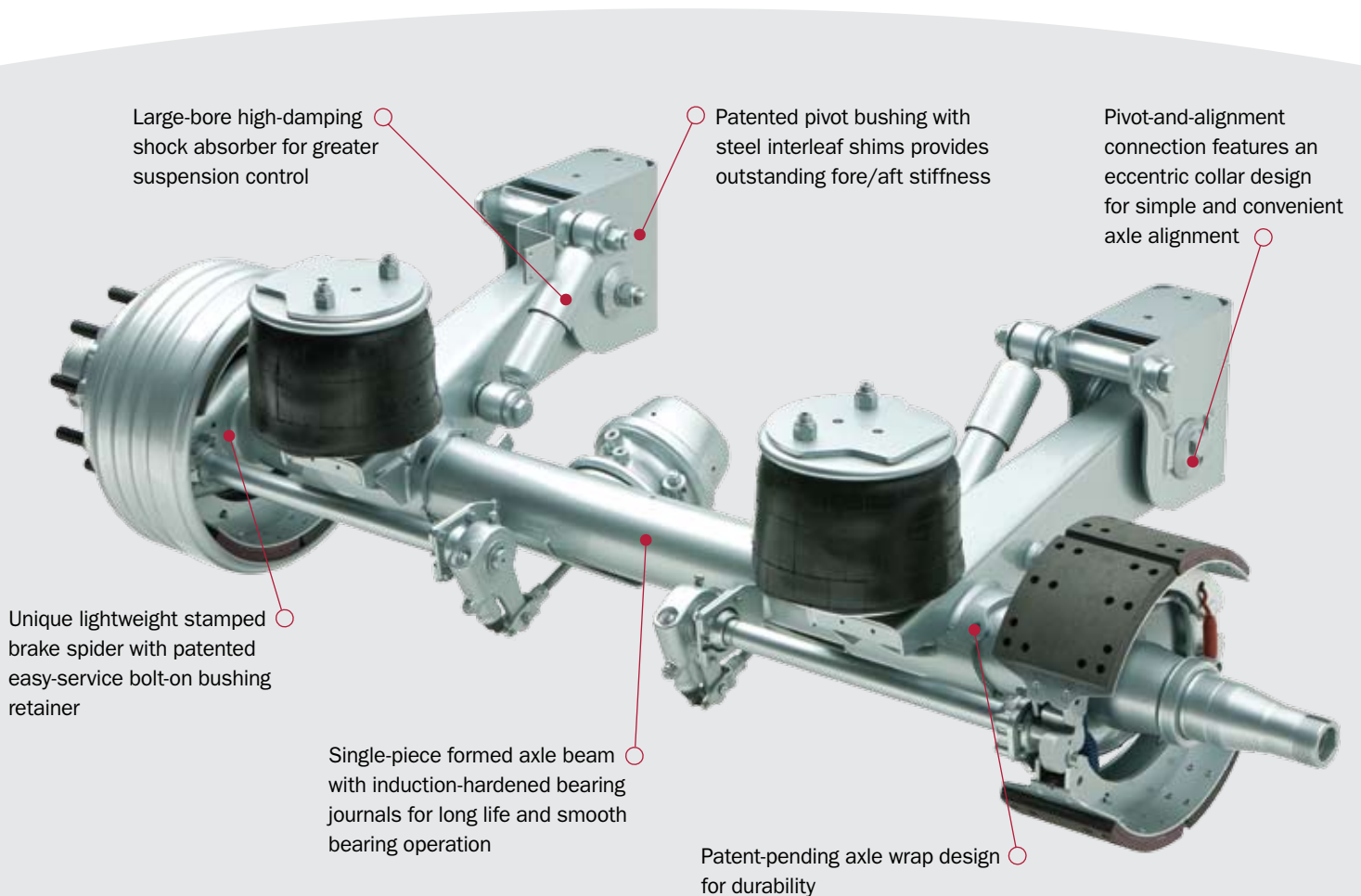
MTA23 TRAILER SUSPENSION



Prepare To Be Amazed. The Meritor® MTA23 top-mount trailing arm air-ride suspension is part of a complete portfolio of suspensions that deliver industry-leading ride, handling, tire life and durability. This hardworking trailer suspension is designed for a full range of applications from flatbeds to tanks to grain haulers.

With advanced patented technology like a long-life pivot bushing, a unique axle wrap design and high-damping shock absorbers, the MTA23 is the next generation of air-ride suspension. It's an integrated system that includes road-proven genuine Meritor axles and brakes and is backed by equally amazing Meritor service and support.

Meritor® MTA23 Trailer Suspension.



Features And Benefits:

- Applicable for a broad range of trailer applications with up to 23,000-lb.* rating
- Integrated design includes genuine Meritor axles and brakes – recognized as the industry’s best
- Patented pivot bushing absorbs road input for improved ride and cargo protection
- An innovative axle wrap design provides a secure axle connection for greater overall suspension durability
- The larger, more robust shock absorber – specifically tuned to the suspension:
 - Provides superior damping force, braking and vehicle control
 - Helps to improve tire life
- Design allows for simple installation on a variety of trailer frames; no special tools are required to torque fasteners

*Suspension and axle beam rating only. Brake and wheel-end components rated separately.

Technology That Amazes. A Trailer Suspension That Delivers Amazing Results.

Patented Pivot Bushing.

- Bushing with steel interleaf shims provides better fore/aft stiffness than competitive designs
 - Provides excellent roll stiffness, minimizing roll steer for better trailer tracking during cornering
 - Maintains correct axle position during operation for improved tire life
- Strategically positioned voids impart vertical compliance
 - Absorb road input for a softer ride and better cargo protection
- Helps reduce torsional stresses at the axle for greater suspension durability



Axle Connection.

- Patent-pending axle wrap design provides a secure axle connection for greater overall suspension durability
 - Specially configured window geometry provides a more effective load distribution for maximum strength
 - Weld is continuous with no open start or stop, eliminating high stress points
 - Axle wrap adds thickness and strength to the axle at critical connection areas
- Robotically welded for structural integrity



Heavy-Duty Shock Absorbers.

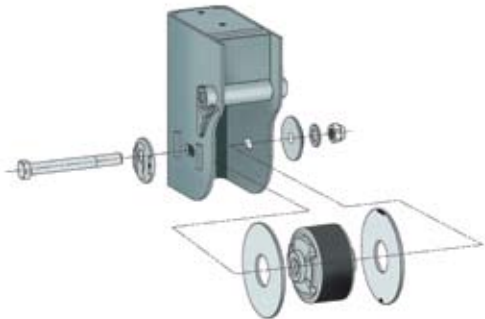
- Larger shock absorbers specifically tuned to the suspension provide three times more damping power than competing designs
- High damping forces deliver increased suspension control
 - Maintain a more consistent tire footprint for increased tread life and better stopping
 - Provide a more controlled ride
- Large-bore design with high fluid capacity for cool operation and longer life
- Tube-style shock mounts effectively withstand the load of suspension movement while the long, large-diameter bolts maintain optimum clamp load
- Integral rebound check feature protects against air-spring overextension





Pivot-And-Alignment Connection.

- Pivot-and-alignment connection features an eccentric collar design – no welding required
- No special tools required – easy to achieve a 470- to 570-ft. torque requirement
- Field realignment can be achieved without replacing hardware



Proven Meritor® Axles And Brakes.

The Meritor MTA23 is the only integrated trailer suspension equipped with industry-leading Meritor components, including genuine Meritor axles and brakes.

- Standard, field-proven, long-life brake linings are preferred by fleets for their performance and wear characteristics
- Optional PlatinumShield™ coating on Q Plus™ brake shoes to resist rust-jacking and provide extended brake shoe life
- Patented Meritor brake rollers extend camshaft life
- Unique stamped brake spider is the lightest in its class

Amazing Support.™

Being a recognized leader in axles, suspensions and brakes calls for service and support that is as amazing as our products. That's why we offer Amazing Support. It's a complete package of services that includes genuine OE-quality aftermarket parts availability, with complete aftermarket service and full customer support. All brought to you by the industry's most knowledgeable, committed reps, dedicated customer service and technical support, complete online catalogs, expert training programs and comprehensive product warranty support.

With Amazing Support, you get:

- Dedicated, responsive suspension specialists and product training support
- Fast parts availability through 5,300 distributor and OE dealer locations
- Spec optimization and application engineering support
- Personal attention for training and after-sale support
- Real-time support and warranty administration

For more information on the MTA23 air-ride trailer suspension – including Amazing Support – call 800-535-5560 or visit MeritorTrailerSuspensions.com today.

MTA23 Specifications.

Capacity	Trailer Applications	System Base Model Configuration	System Base Weight
23,000 lbs.*	Platform/flatbed, tank, grain, fixed-axle van and reefer, bottom-discharge dump, container chassis, livestock	14" ride height, TN axle with 71.5" track, with 16.5" x 7" Q S-cam brakes with Meritor MA212 linings	530 lbs.

Ride Height Range And Axle Travel.

Ride Height	Jounce	Rebound
14"	3.0"	4.0"
15"	3.1"	4.0"
16"	3.1"	4.0"
17"	3.1"	4.0"

Available Options.

Axle	TN, TQ, TP
Axle Track	71.5", 77.5", 83.5"
Ride Height	14", 15", 16", 17"
Brakes	S-cam brakes: 16.5" x 7", 8" and 8.625" Q and Q Plus™ Air disc brakes: EX225 and PAN 22
Frame Attachment	Weld-on or bolt-on
Meritor Tire Inflation System (MTIS™) by P.S.I.	Automatic tire inflation system that keeps tires properly inflated
Shock Absorber	Standard or high-damping
Other	A variety of wheel-end options, slack adjusters, brake linings and chambers are available

*Suspension and axle beam rating only. Brake and wheel-end components rated separately.





ArvinMeritor™

Meritor Heavy Vehicle Systems, LLC
2135 West Maple Road
Troy, Michigan 48084-7121 USA
800-535-5560
meritortrailersuspensions.com
arvinmeritor.com

Litho in USA
Revised 05-10
SP-10104 (13028/11900)
©2010 ArvinMeritor, Inc.